

TABLE OF CONTENTS

Safety instructions	5
Before first use	9
Heating appliance empty	10
Preparation for use	11
Fitting glass turntable	11
Fitting grill rack	12
Using the baking tray	12
Controls	13
Setting clock time	13
Microwave mode	13
Microwave / Grill mode	14
Microwave / hot air oven mode	15
Control of microwave, hot air and grill	16
Using the microwave	16
Using the grill	16
Using the hot air oven	16
Using the microwave/grill combination	17
Using the microwave / hot air combination	18
Using the defrost function	18
Cooking in two steps	18
Quick start function	19
Cleaning the appliance	21
Additional functions	22
Child security	22
Checking settings during cooking	22
Notes on special features	23
Troubleshooting	24

THANK YOU VERY MUCH FOR YOUR PURCHASE!

We congratulate on your new microwave oven and are convinced that you will be delighted with this modern appliance.

In order to guarantee the ideal function and performance of your microwave oven at all times and in order to protect your personal safety, we would make the following request:

- Please read these operating instructions thoroughly and follow them and the safety notes in particular before using the appliance for the first time!
- All actions on and with this appliance may only be undertaken as described in the operating instructions.
- If you pass on the appliance it is essential that you also provide the operating instructions!

DISPOSAL

Packaging

Your microwave oven is wrapped in packaging to protect it against transportation damage. Packaging is raw material and can be reused or added to the recycling system.

Appliance

At the end of its life, the microwave oven must not be disposed of in household rubbish. Seek the advice of your local authority on correct, environmentally-friendly disposal.

SAFETY INSTRUCTIONS

AREA OF USE

- This appliance is intended exclusively for domestic use. It may only be used for heating suitable foods in containers suitable for use in microwave ovens.
- When heating food in plastic or paper containers, the cooking appliance must be checked frequently because of the possibility of fire.
- The microwave oven is not suitable for preparing deep fried food. The appliance is also not suitable for drying objects. Caution - fire risk!
- Note that children may not use the appliance, since children are not yet able to recognise the hazards that may arise when dealing with electrical appliances.

SETTING UP AND ELECTRICAL CONNECTION

- Only connect the microwave oven to a regulation-compliant 230 V, 50 Hz socket with a protection/fuse current of at least 16 A. Do not use an extension cable.
- Place the appliance on a sturdy, level surface in a protected, dry area.
- Respect the minimum clearances and never cover the ventilation slots. Place nothing on top of the microwave oven as it becomes hot when in operation.
- Protect the appliance from drips and splashes. If the appliance, nevertheless, comes into contact with water, pull the plug from the socket immediately.

CAUTION:

During operation, the accessible surfaces can become very hot!



Caution! Hot surface!

PRECAUTIONS FOR USE

- Only use the microwave oven with the roller ring and turntable supplied.
- Never operate the appliance without food in the oven.
- Only use the accessories supplied or approved by us.
- Only use crockery that is suitable for use in microwave ovens.

SAFETY INSTRUCTIONS

- In microwave mode, never use crockery with metallic decoration, metallic containers or grill stands, as damage to the appliance may result.
- Do not remove any covers from the microwave oven or the inner foil from the viewing window, as microwave radiation can then be emitted.
- Never leave the appliance unattended during operation.
- Inadequate cleanliness of the appliance can lead to destruction of the surface, reducing the useful life and possibly leading to dangerous situations.

CAUTION:

When heating liquids in the microwave oven, superheating can occur, i.e. the liquid can reach boiling point without steam being released. When agitated, as may occur when removing the vessel from the oven, the steam may be explosively released.



There is a risk of scalding.

To avoid this problem, remember, when heating liquids, to place a glass or ceramic rod in the container. This will inhibit delayed boiling.

- Never heat food in closed containers. Always remove the lid from jars and bottles, such as baby bottles.
- Before heating food with skins, such as sausages or tomatoes, prick the skin at various points to avoid bursting.
- Only cook eggs in microwave crockery designed for the purpose.
- Do not warm up hard-boiled eggs in the microwave oven.



Eggs that have already been cooked can explode even after being removed from the oven!

- Where possible, stir food after heating to distribute the heat evenly or leave it to stand for a while.
- Before eating, check the temperature of food heated in the microwave oven. Take special care with babyfood and always stir or shake children's food before checking the temperature.

FAULTS

- Protect the appliance and the mains cable from damage.
- Before each use, check the appliance and the mains cable for damage.
- If found to be damaged, the appliance should under no circumstances be used. Pull the mains plug from the socket immediately.
- A defective appliance or damaged mains cable should be repaired without delay in an approved workshop or you should contact the Medion Service department to avoid taking risks.

WARNING!

It is dangerous for anyone other than properly trained persons to carry out any maintenance or repair work, which involves the removal of any covers that prevent exposure to microwave radiation.

- If smoke is observed, it is essential to keep the door closed to avoid the formation of flames or to smother any that have already formed and turn the appliance off immediately by pressing the STOP/CLEAR button.
- The mains plug must then be pulled from the socket without delay.
- The appliance may never be switched on if there is damage to the casing, the door or the door latch. Have the appliance repaired in an approved workshop or contact the Medion Service department.
- Place the microwave oven on a sturdy, level, heat-proof surface. Respect the minimum clearances.
- Ensure that the microwave oven is not too close to a source of heat or in an area in which it may come into contact with water.

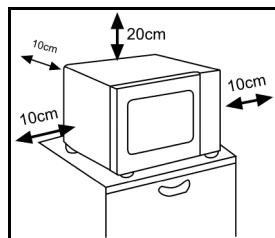
SAFETY INSTRUCTIONS

ABOUT MICROWAVES

Microwaves are high-frequency electromagnetic waves that heat food placed in the oven cavity. Microwaves heat all non-metallic objects. You should, therefore, use no metallic objects in the microwave oven. These heating effect depends on the water content of the food. To achieve optimum heat distribution, allow food to stand for one or two minute after removing it from the oven.

BEFORE FIRST USE

- Unpack the appliance and all its accessories.
- Place the microwave oven on a sturdy, level, heat-proof surface. Respect the minimum clearances.
- Ensure that the microwave oven is not too close to a source of heat or in an area in which it may come into contact with water.
- Do not place anything (vases, covers etc.) on the appliance.
- Check that you have all the accessories before throwing away the packaging.
- Before you operate your appliance for the first time using the grill or hot air oven (fan) functions, clean the appliance and all accessories to remove any production residues.
- Remove the protective foil from the appliance and its control panel.
- Clean all accessories in hot water with a mild detergent and dry them.
- Clean the appliance carefully with a damp cloth, inside and out and rub it dry.



Do not use the microwave oven outdoors!

HEATING THE APPLIANCE WHEN EMPTY

- Without food or accessories in the oven, switch on the appliance in hot air oven mode by pressing the hot air oven button and rotate the control clockwise until a temperature setting of 230 °C is shown on the display.
- Press the START/OK button. Now turn the rotary control clockwise until a cooking time of 20:00 minutes is shown on the display.
- Press the START/OK button. A slight odour may be produced by this initial heating. The vapours are harmless and quickly disappear.
- Ensure the ventilation is adequate.
- After 20 minutes, the appliance turns off automatically. Wait until it has cooled down completely.
- Pull the mains plug from the socket and then clean the appliance once again with a damp cloth and dry.

PREPARATION FOR USE

CAUTION:



Do not remove the protective foil on the inner side of the door or the card on the right side of the cavity, otherwise, microwave radiation can leak out.

Check the mains cable and the appliance, especially the door and the door latch, for damage.

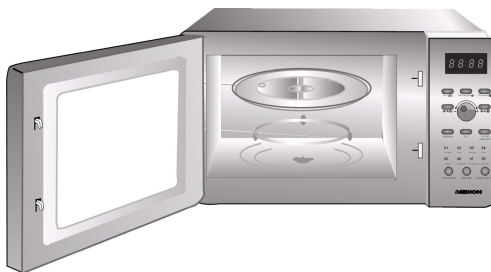
CAUTION:



If damaged in any way, the appliance may not be connected to the supply. Have the appliance repaired in an approved workshop or contact the Medion Service department hotline.

- Plug the mains plug into a regulation compliant, earthed mains socket (230 V, 50 Hz).
- Ensure that the mains cable cannot come into contact with sources of heat or sharp edges.

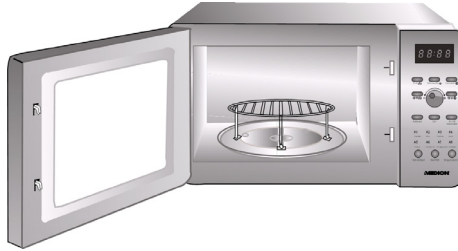
FITTING THE GLASS TURNTABLE



- Position the roller ring in the middle of the oven cavity.
- Place the glass turntable on the roller ring and position it to engage in the drive.

PREPARATION FOR USE

FITTING THE GRILL RACK



- For grilling or in hot air oven mode, place the grill rack centrally on the glass turntable, rack upwards.

CAUTION:



Do not use the grill rack in microwave only mode!

USING THE BAKING TRAY

- Use the baking tray supplied for pizzas and similar pastry bases. The baking tray is specially shaped so that the pastry is browned at the bottom when baked in a hot air oven.

CONTROLS

SETTING CLOCK TIME

Once the microwave oven is connected to the supply, the display will show "0:00". To set the clock, proceed as follows:

- Press the CLOCK button. The hour digits in the display will blink.
- Turn the rotary control to set the hours.
- Press the CLOCK button to enter the hour setting. The minute digits in the display will blink.
- Turn the rotary control to set the minutes.
- Press the CLOCK button to enter the setting.

NOTE:



If, while setting the clock, you press the STOP/CLEAR button or do nothing for one minute, the display will return to the previous setting.

MICROWAVE MODE

- Press the MICROWAVE button repeatedly to step through the 5 power levels of the appliance. The power levels are as follows:

"M-W" presses	1x	2x	3x	4x	5x
Power level	Maximum	High	Medium	Low	Minimum
Display	P 100	P 80	P 50	P 30	P 10

CONTROLS

MICROWAVE / GRILL MODE

In this mode the grill is set to full power. In addition, the microwave function can be added in combinations 1 and 2.

- Press the GRILL button or the MICROWAVE/GRILL button to select the desired program as shown in the table.

Button	Function	Display
Press GRILL once	Grill	G-1
Press MICROWAVE/GRILL once	Combination 1 36% microwave, 64% grill	G-2
Press MICROWAVE/GRILL twice	Combination 2 55% micro- wave, 45% grill	G-3

NOTE:



To check whether you have selected the grill mode: during grilling, only the heating elements and the fan are in operation.

MICROWAVE / HOT AIR OVEN MODE

- Press the HOT AIR/MICROWAVE button to select one of the two combination settings.
- Press the HOT AIR/MICROWAVE button once to select hot air mode at 180 °C. The display will show "C1".

With this setting, 52% of the power comes from the microwave and 48% from the air heater.

- Press the HOT AIR/MICROWAVE button twice to select hot air mode at 200°C. The display will show "C2".
- With this setting, 27% of the power comes from the microwave and 73% from the air heater.

Summary of the functions:

Button	Function	Display
Press MICROWAVE / HOT AIR once	52% microwave, 48% hot air	C-1
Press MICROWAVE / HOT AIR twice	27% microwave, 73% hot air	C-2

CONTROL OF MICROWAVE, HOT AIR AND GRILL

USING THE MICROWAVE

Press the Microwave button repeatedly to select one of the 5 power levels. The display will show the symbol "☉".

- Turn the rotary control clockwise to set a cooking time of up to 95 minutes.
- Press the START/OK button to start cooking. The "" symbol in the display will blink.

USING THE GRILL

- Press the GRILL button to select grill mode. The display will show the symbol, "UU" and "G-1".
- Turn the rotary control clockwise to set a cooking time of up to 95 minutes.
- Press the START/OK button to start cooking.

USING THE HOT AIR OVEN

1. with pre-heating

- Press the HOT AIR button to select hot air mode. The display will show the symbols, "☼", "UU" and "°C" and the blinking number 140. This indicates that a temperature of 140 °C has been set for pre-heating (temperature blinking).
- Turn the rotary control to set a pre-heat temperature of up to 230 °C (if no change is made in the setting, the oven is pre-heated to 140 °C).
- Press the START/OK button to enter the setting (the temperature continues to blink).
- Press the START/OK button again to start pre-heating. As soon as the selected temperature is reached, the oven will switch off and beep five times. In the display, the temperature setting blinks.
- Open the door, place the food in the oven and close the door again.
- Turn the rotary control to set the cooking time.
- Press the Start/Stop button to start cooking. The "☼" and "UU" symbols in the display will blink.

CONTROL OF MICROWAVE, HOT AIR AND GRILL

2. without pre-heating

- Press the HOT AIR button to select hot air mode. The display will show the symbols, "☼", "U" and "°C" and the blinking number 140. This indicates that a temperature of 140 °C has been set for pre-heating (temperature blinking).
- Turn the rotary control to set a pre-heat temperature of up to 230 °C (if no change is made in the setting, the oven is pre-heated to 140 °C).
- Press the START/OK button to enter the setting (the temperature continues to blink).
- Turn the rotary control to set a cooking time.
- Press the START/OK button to start cooking. The "☼" and "U" symbols in the display will blink.

USING THE MICROWAVE/GRILL COMBINATION

- Press the MICROWAVE/GRILL button once or twice to select combination 1 or 2. The display will show "G2" or "G3". "☼" and "U".
- Turn the rotary control to set a cooking time.
- Press the START/OK button to start cooking. The "☼" and "U" symbols in the display will blink.

NOTE:



When cooking in microwave/grill mode starts, the temperature display goes blank.

CONTROL OF MICROWAVE, HOT AIR AND GRILL

USING THE MICROWAVE / HOT AIR COMBINATION

There are two settings for the microwave / hot air combination.

- Press the MICROWAVE/HOTAIR button once or twice to select a combination setting. The display will show the symbols, "☉", "☼" and "UU" blinking.
- Turn the rotary control to set a cooking time.
- Press the START/OK button to start cooking. The display will show the symbols, "☉", "☼" and "UU" blinking.

USING THE DEFROST FUNCTION

- Press the DEFROST key. The display will show "dEF 1".
- Turn the rotary control to set the weight of the food to be defrosted. The display will show the symbols, "g", "✱✱", "AUTO" and "☼".
- Press the START/OK button to start defrosting. The "☼" symbol in the display will blink, indicating that defrosting has started.

COOKING IN TWO STEPS

For convenience, you can also use two functions/modes, one after the other.

- To do this, select one function (e.g. microwave) and enter your settings as described above.
- Now select another function (e.g. hot air oven) and enter your settings.
- Press the START/OK button to start cooking. The two steps will run one after the other.

NOTE:



**The defrost function can only be set as the first step.
The automatic function cannot be set as one of the steps.**

QUICK START FUNCTION

- Press the QUICK START button to start quick cooking with full microwave power for one minute.
- Each time the QUICK START button is pressed, the cooking time is increased by a further minute. The display will show the symbol, "🕒" blinking.

CONTROL OF MICROWAVE, HOT AIR AND GRILL

Using the automatic function

- Press the AUTOMATIC button.
- Turn the rotary control to select an automatic program from A1 to A8.
- Press the START/OK button to enter the program selection.
- Turn the the rotary control to select the weight of the food to be cooked using programs A2 to A6 or the number of portions for programs A1, A7 and A8.
- Press the START/OK button to start the automatic program.

Table of automatic programs:

Auto. Prog.	A1	A2	A3	A4	A5	A6	A7	A8
Weight	potatoes	rice	veg.	chicken	meat	reheat	convenience food	beverages
1	1 port'n	50 g	100 g	400 g	100 g	50 g	1 port'n	1 port'n
2	2 port'n	100 g	200 g	600 g	200 g	100 g	2 port'n	2 port'n
3	3 port'n	150 g	300 g	800 g	300 g	150 g		3 port'n
4		200 g	400 g	1,000 g	400 g	200 g		
5		250 g	500 g	1,200 g	500 g			
6			600 g	1,500 g	750 g			

CLEANING THE APPLIANCE

The microwave oven should be cleaned regularly, removing food residues. Inadequate cleanliness of the appliance can lead to destruction of the surface, reducing the useful life and possibly leading to dangerous situations.

- Before cleaning, always pull the mains plug from the socket.
- Never allow the appliance itself to come into contact with liquids and never immerse the appliance in water.

CAUTION:



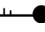
Risk of electric shock.

- Allow the appliance to cool down completely.
- Wash the grill rack and turntable in a mild soapy solution or in the dishwasher.
- Wipe out the oven cavity with a damp cloth.
- Clean parts of the door and viewing window, especially the seal and the door latch, carefully with a mild soapy solution. Pay special attention to damage to these parts.
- If required, you can also wipe over the casing with a damp cloth.
- Leave the microwave oven to dry properly with the door open. It is essential to wait until the microwave oven is completely dry. Only then may the appliance be plugged back into the mains.

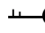
ADDITIONAL FUNCTIONS

CHILD SECURITY

Locking buttons

- Hold down the STOP/CLEAR button for approx. 3 seconds. You will hear a beep and the symbol, , will appear in the display. The control buttons are now locked.

Unlocking buttons

- Hold down the STOP/CLEAR button for approx. 3 seconds. You will hear a beep and the symbol, , will disappear from the display. The control buttons are now active again.

CHECKING SETTINGS DURING COOKING

During cooking, you can check the settings you have made. To do this, press the appropriate mode button. The display will show the current temperature or power setting. After approx. 3 seconds, the display will switch back to the previous indication.

Microwave mode

Press the MICROWAVE button.

Hot air mode

Press the HOT AIR button.

Microwave / Grill combination

Press the MICROWAVE/GRILL button.

Microwave / Hot air oven

Press the MICROWAVE/HOT AIR button.

Automatic function

Press the AUTOMATIC button.

NOTES ON SPECIAL FEATURES

The maximum cooking time for microwave, grill, hot air oven, microwave/grill and microwave / hot air modes is 95 minutes.

In grill mode, the oven will beep twice to remind you to turn the food. If there is no input for one minute, the appliance will start up at once.

TROUBLESHOOTING

Problem	Possible cause	Solution
The appliance will not start	The mains plug is not correctly inserted	Pull out the plug, wait 10 seconds and reinsert it.
	The fuse is blown or the safety cut-out has tripped.	Replace the fuse or reset the cut-out (contact our Service Department).
	The mains socket is defective.	Check the socket by plugging in another appliance.
The appliance does not heat.	The door is not closed.	Close the door.
The turntable makes loud noises when turning.	The roller ring or oven floor is dirty.	Clean the appliance. See "Cleaning the appliance".
The appliance display shows an error indication, E1, E2 or E3.	The safety times and temperatures were not respected.	Unplug the appliance for 5 minutes. Turn it on again.

